



RISE MAT SEND INFORMATION REPORT

Adopted by Measham C of E Primary School



Approved by Board of Directors: Sept 2023

Review Date: Sept 2026

SEND Information Report CONTENTS

1	School context	3
2	What types of SEND does the school provide for?	3
3	Who are the best people to talk to at our school about my child's difficulties with learning / SEND?	3
4	What should I do if I think my child has SEND?	3
5	How will the school know if my child needs SEND support?	4
6	How will the school measure my child's progress?	5
7	How will I be involved in decisions made about my child's education?	5
8	How will my child be involved in decisions made about my their education?	6
9	How will the school adapt its teaching for my child?	6
10	How will the school make sure my child is included in activities alongside pupils who don't have SEND?	6
11	What should I do if I have a complaint about my child's SEND support?	6
12	What should I do if I have a complaint about my child's SEND support?	7

School context

At Measham C of E Primary School (MCEPS), we are a fully inclusive school; we recognise every pupils right to a broad and balanced curriculum and we celebrate diversity. Teachers and support staff are highly skilled at supporting children with SEND in class and identifying those that require further support.

In Autumn 2025 our SEND profile shows that we have 19.3% of children identified as having SEND. This percentage is made up of the following groups:

- 28.2% are identified as having SEND linked to Cognition and Learning (including maths, reading, writing and spelling etc.)
- 61.5% are identified as having SEND linked to Communication and Interaction (including speech and language difficulties, problems with social interaction and Autism)
- 10.3% are identified as having SEND linked to Social, Emotional and Mental Health Difficulties (including ADHD, ADD, Attachment Disorder, Anxiety and Depression)
- 0% are identified as having SEND linked to Physical and sensory (including disabilities such as those affecting mobility, sight and hearing)

What types of SEND does the school provide for?

Pupils with SEND are considered for admission to Measham C of E Primary School on exactly the same basis as pupils without SEND. The Academy will not discriminate against disabled pupils or prospective pupils on the grounds of disability and will strive to provide an accurate provision for pupils with SEND. In the case of pupils with an EHCP naming the Academy, they will be admitted, unless after reviewing the EHCP the Academy and School believes that it cannot meet need and that to admit the child would be an incompatible and inefficient use of both Academy and LA funds.

Who are the best people to talk to at our school about my child's difficulties with learning / SEND?

Every class teacher has responsibility for:

- checking on the progress of your child
- identifying, planning and delivering an adapted curriculum for your child in class as required
- personalised teaching and learning for your child
- ensuring that the school's SEND Policy is followed in their classroom.

At Measham C of E Primary School, Miss Becky Winfield (SENDCo) holds responsibility for the leadership and day to day management of SEND provision. If you have any queries or concerns, that can't be answered by the class teacher, you should book an appointment through the school office.

What should I do if I think my child has SEND?

If you have concerns about your child's progress or think they might have a special educational need you should, in the first instance, speak to your child's class teacher. If necessary, they will arrange a time that they can meet with you to fully discuss your concerns. The class teacher will discuss your child's learning needs and

interventions that are in place to meet your child's needs. They will then discuss your concerns with the SENDCo who will decide how SEND support can be identified. Parents or carers of children identified as needing SEND support will be invited to a meeting to discuss the provision made for their child. If you have concerns that your child has an unmet special educational need after speaking to one of the above staff, you should contact Miss Becky Winfield (SENDCo) through the school office.

Forms or requests for information that the school are asked to complete should come direct to the school from the outside agency (eg. GP) or with clear instructions to send these forms/ information direct to them. We reserve the right to contact the agency or provider to confirm the requests. These requests for information will have a 28 day turnaround to ensure we can include all the relevant information. These requests will then be sent back directly to the outside agency or provider that has requested it and the parent/carer informed when it has been completed.

If you have questions about SEND, or are struggling to cope, please get in touch to let us know. We want to support you, your child and your family.

To see what support is available to you locally, have a look at Leicestershire's local offer. Leicestershire publishes information about the local offer on their website: <https://www.leicestershire.gov.uk/education-and-children/special-educational-needs-and-disability/where-to-start-with-send/what-is-the-local-offer>

How will the school know if my child needs SEND support?

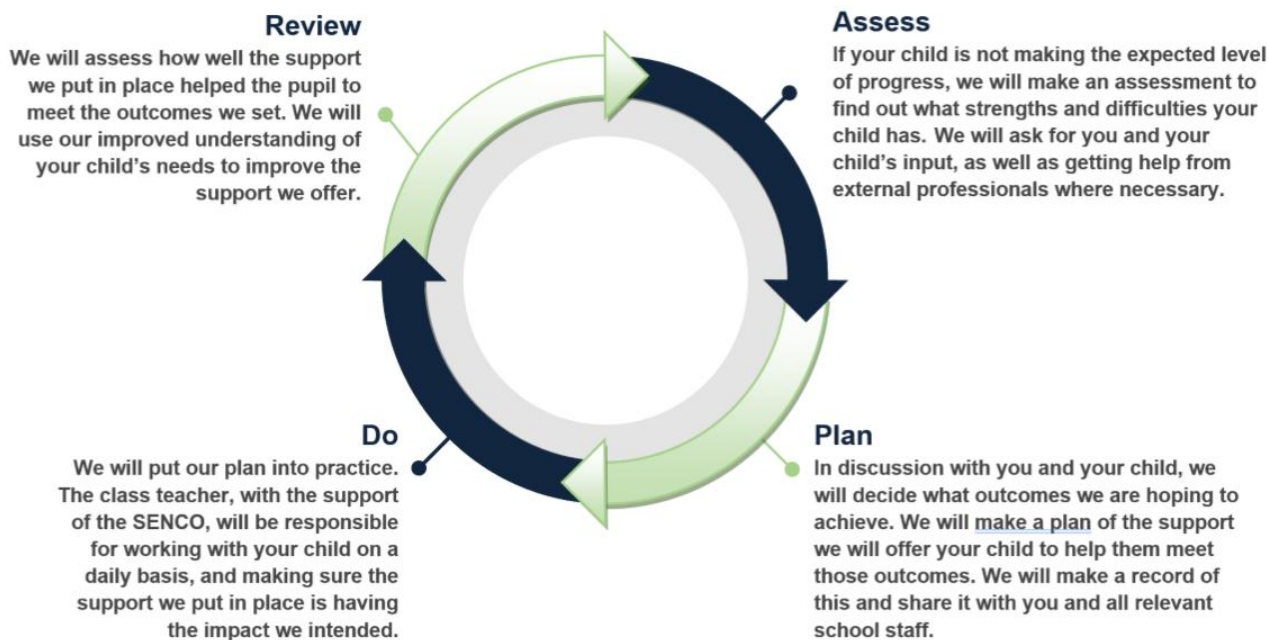
Pupils can be identified as having SEND at any point during their time at the School and Academy, including:

- Upon admission to the School, from information from parents/carers or external agencies
- During transition to the School, from information shared by the previous school
- From class assessments
- When staff raise concerns that a pupil is underachieving or struggling
- Through data analysis, including reading assessments, screening and termly common assessments
- If external agencies are involved with a student

You will then be contacted by the teacher or SENDCo to discuss our concerns. At this point you will be consulted regarding an action plan of support and the planned provision for your child.

How will the school measure my child's progress?

The graduated approach is a 4-part cycle of assess, plan, do, review.



As a part of the planning stage of the graduated approach, we will set outcomes that we want to see your child achieve.

Whenever we run an intervention with your child, we will assess them before the intervention begins. This is known as a 'baseline assessment'. We do this so we can see how much impact the intervention has on your child's progress.

We will track your child's progress towards the outcomes we set over time and improve our offer as we learn what your child responds to best.

How will I be involved in decisions made about my child's education?

We will provide an annual report on your child's progress. You can meet with your child's class teacher a minimum of 3 times a year, to:

- Set clear outcomes for your child's progress
- Review progress towards those outcomes
- Discuss the support we will put in place to help your child make that progress
- Identify what we will do, what we will ask you to do, and what we will ask your child to do

The SENDCO may also attend these meetings to provide extra support, or you may have a different meeting with the SENDCo.

We know that you're the expert when it comes to your child's needs and aspirations. So, we want to make sure you have a full understanding of how we're trying to meet your child's needs, so that you can provide insight into what you think would work best for your child.

We also want to hear from so that we can build a better picture of how the SEND support we are providing is impacting your child outside of school.

If your child's needs or aspirations change at any time, please let us know right away so we can keep our provision as relevant as possible.

After any discussion, we will make a record of any outcomes, actions and support that have been agreed. This record will be shared with all relevant staff, and you will be given a copy.

If you have concerns that arise between these meetings, please contact your child's class teacher via our office.

How will my child be involved in decisions made about their education?

The level of involvement will depend on your child's age, and level of competence. We recognise that no two children are the same, so we will decide on a case-by-case basis, with your input.

We may seek your child's views by asking them, amongst other things, to:

- Attend meetings to discuss their progress and outcomes
- Prepare a presentation, written statement, pictures, video, drawing, etc.
- Discuss their views with a member of staff who can act as a representative during the meeting
- Complete a survey

How will the school adapt its teaching for my child?

Our teachers use adaptive teaching strategies in all curriculum areas to ensure learning is accessible to all pupils. This includes planning adaptations to activities before the lesson, making adjustments whilst teaching and through small group learning.

Adaptations to the curriculum or learning environment may be made to remove barriers to learning but these are very dependent on every child's individual needs.

How will the school make sure my child is included in activities alongside pupils who don't have SEND?

All of our extra-curricular activities and school visits are available to all our pupils, including any before and after-school clubs.

All pupils are encouraged to go on our school trips, including any residential trips.

All pupils are encouraged to take part in Sports Day, Productions, Dance Festival and all other extra-curricular activities

No pupil is ever excluded from taking part in these activities because of their SEND or disability and we will make whatever reasonable adjustments are needed to make sure that they can be included. It may be appropriate to risk-assess the activity to ensure safety elements have been considered.

What should I do if I have a complaint about my child's SEND support?

If you have a concern about the provision for your child there are procedures outlined in the School's Complaints Policy.

If there continues to be disagreement with regard to SEND provision following meetings with the school, SENDIASS is an organisation that provides free, impartial and confidential advice and support to parents and carers of young people aged 0-25 with special education needs, their contact information is below.

<https://sendiassleicestershire.org.uk>

